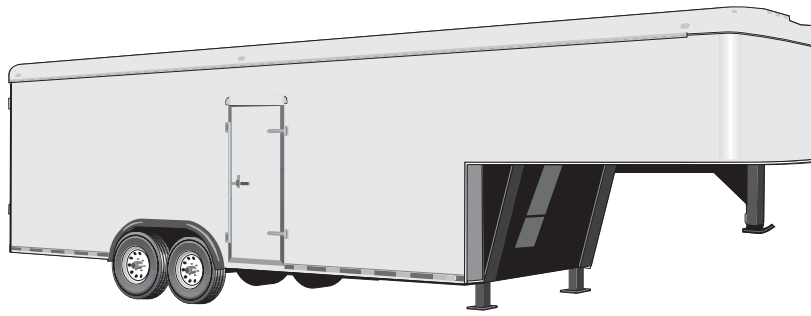


GENERAL APPLICATIONS



7200 LBS. CAPACITY

AXLE TYPES

7200 lbs. capacity

- Complete service manual
- Precision machined steel spindles and integral cast iron hub/drums
- Finned brake drums for better heat dissipation
- $\frac{9}{16}$ " or $\frac{5}{8}$ " press-in wheel studs
- Improved bearing package; unitized seals
- Standard grease lubrication; optional oil bath; E-Z Lube® option
- $12\frac{1}{4}$ x $2\frac{1}{2}$ " electric brakes, CSA approved at 7100#
- Inner wiring system for easier installation and protection of brake wiring



- Totally rubber-cushioned for smooth, quiet independent ride
- Easy installation with less maintenance
- Less transfer of road shock which insulates cargo from road shocks and vibration
- Rubber cords compounded for maximum dependability and durability
- Load-carrying cross member
- Self-damping action
- Independent wheel suspension system
- 5 year limited warranty on suspension system
- Low profile for maximum road clearance
- Various starting angles to control trailer height
- High and low profile brackets with optional mounting brackets available
- Rubber cushioning eliminates metal-to-metal contact
- Shock absorption provided by the natural hysteresis of rubber
- Single or tandem axle assemblies
- Durable, wear-resistant components

D72 LEAF SPRING

- Heavy wall 3" diameter tube
- Straight or Drop spindles (4" drop only)
- High quality alloy steel springs in different capacities



- Single, tandem or triple axle assemblies with equalized suspensions
- Slipper leaf spring suspension
- Heavy duty suspension parts available
- Optional rubber bushed suspension
- Optional hanger and attaching parts kits available
- Durable, wear-resistant components
- 2 year limited warranty



CAUTION:

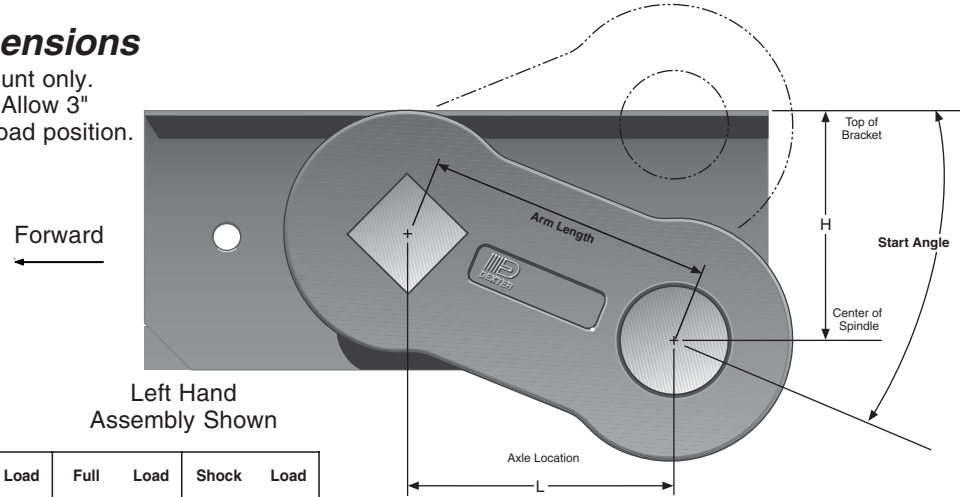
Triple axle assemblies are NOT recommended for Torflex® axles.

DEXTER AXLE



Articulation Dimensions

Dimensions are for top mount only. Side mount is .31" higher. Allow 3" bump clearance from full load position.



Left Hand Assembly Shown

| Start Angle | Bracket Profile | No Load | | Full Load | | Shock Load | |
|-------------|-----------------|---------|------|-----------|------|------------|------|
| | | H | L | H | L | H | L |
| 45° down | Low | 6.24 | 4.24 | 4.30 | 5.54 | 3.30 | 5.86 |
| | High | 6.99 | 4.24 | 5.05 | 5.54 | 4.05 | 5.86 |
| 22.5° down | Low | 4.30 | 5.54 | 2.00 | 6.00 | 0.96 | 5.91 |
| | High | 5.05 | 5.54 | 2.75 | 6.00 | 1.71 | 5.91 |
| 10° down | Low | 3.04 | 5.91 | 0.70 | 5.86 | -0.30 | 5.54 |
| | High | 3.79 | 5.91 | 1.45 | 5.86 | 0.45 | 5.54 |
| 0° | Low | 2.00 | 6.00 | -0.30 | 5.54 | -1.22 | 5.06 |
| | High | 2.75 | 6.00 | 0.45 | 5.54 | -0.47 | 5.06 |
| 10° up | Low | 0.96 | 5.91 | -1.22 | 5.06 | -2.05 | 4.42 |
| | High | 1.71 | 5.91 | -0.47 | 5.06 | -1.30 | 4.42 |
| 22.5° up | Low | -0.30 | 5.54 | -2.24 | 4.24 | -2.91 | 3.44 |
| | High | 0.45 | 5.54 | -1.49 | 4.24 | -2.16 | 3.44 |

#12V OVERHANG PER SIDE

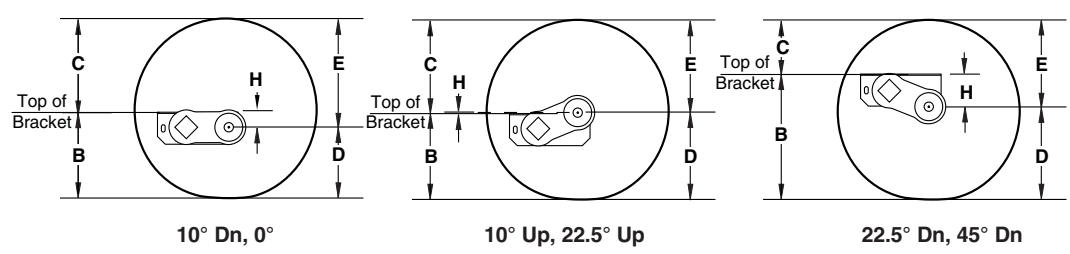
| Spindle | Min. | Max. |
|----------|-------|--------|
| Standard | 7.00" | 14.77" |

Note: Positive numbers in the H column indicate the spindle is BELOW the top of the bracket. Conversely, negative numbers are ABOVE the top of the bracket.



Full Load Dimensions

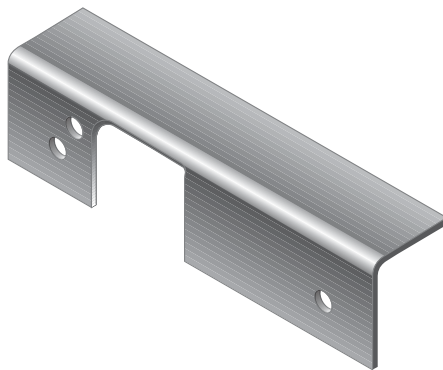
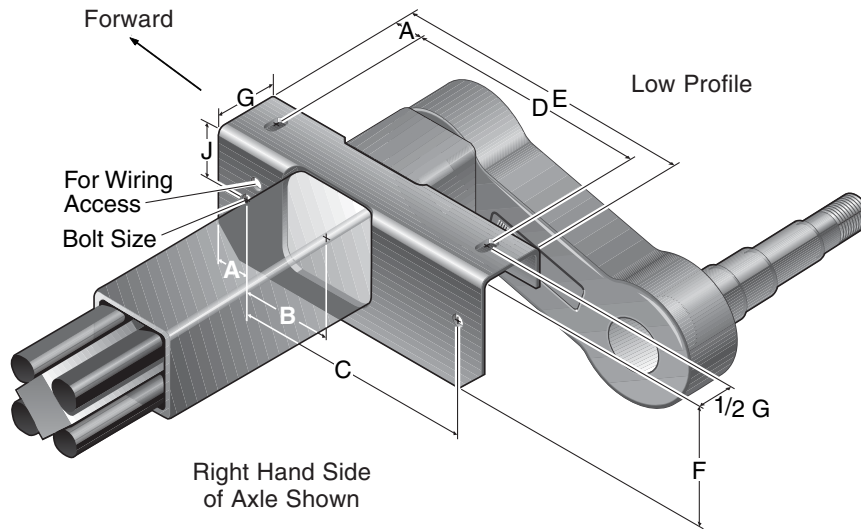
Dimensions are for low profile, top mount only. High profile brackets are .75" higher. Side mount is .31" higher. Allow 3" bump clearance from full load position.



START ANGLE

| Tire | 45° Down | | | 22.5° Down | | | 10° Down | | | 0° | | | 10° Up | | | 22.5° Up | | | D | E |
|-------------|----------|------|------|------------|------|------|----------|------|------|------|------|------|--------|------|------|----------|------|------|------|------|
| | H | B | C | H | B | C | H | B | C | H | B | C | H | B | C | H | B | C | | |
| LT235/85R16 | 4.3 | 18.6 | 11.1 | 2.0 | 16.3 | 13.4 | 0.7 | 15.0 | 14.7 | -0.3 | 14.0 | 15.7 | -1.2 | 13.1 | 16.6 | -2.2 | 12.1 | 17.6 | 14.3 | 15.4 |
| 7.50-16LT | 4.3 | 19.2 | 12.4 | 2.0 | 16.9 | 14.7 | 0.7 | 15.6 | 16.0 | -0.3 | 14.6 | 17.0 | -1.2 | 13.7 | 17.9 | -2.2 | 12.7 | 18.9 | 14.9 | 16.7 |
| 9.50-16.5LT | 4.3 | 18.4 | 10.9 | 2.0 | 16.1 | 13.2 | 0.7 | 14.8 | 14.5 | -0.3 | 13.8 | 15.5 | -1.2 | 12.9 | 16.4 | -2.2 | 11.9 | 17.4 | 14.1 | 15.2 |

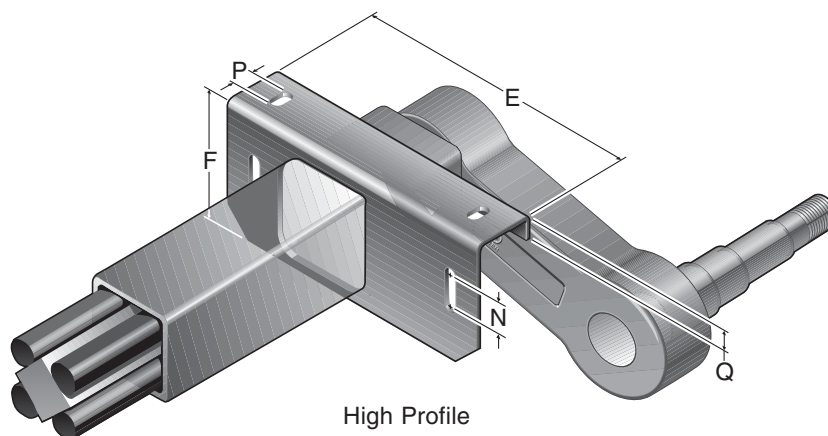
Bracket Dimensions



Side Mount Hanger

#12V BRACKET DIMENSIONS

| | Low | High |
|--|-------|-------|
| A | 1.25 | 1.25 |
| B | 3.50 | 3.50 |
| C | 9.50 | 9.50 |
| D | 9.00 | 9.00 |
| E | 12.00 | 12.00 |
| F | 4.37 | 5.12 |
| G | 2.50 | 2.50 |
| J | 2.06 | 2.06 |
| N | ---- | 1.03 |
| P | ---- | 1.00 |
| Q | ---- | 1.00 |
| Bolt size ⁵ / ₈ " bolt | | |
| Tube Size | | |
| | 3.50 | 3.50 |



LEAF SPRING APPLICATION INFORMATION

7200 LBS. CAPACITY

SLIPPER SPRING AXLE ASSEMBLIES

| Hanger Kits | | | Quantity Per Kit | | |
|-------------|---------------|------|------------------|------------|------------|
| Part No. | Description | Ht. | HGR-138-00 | HGR-238-00 | HGR-338-00 |
| 028-009-01 | Front Hanger | 5.00 | 2 | 2 | 2 |
| 029-005-01 | Center Hanger | 4.50 | ---- | 2 | 4 |
| 030-006-01 | Rear Hanger | 6.38 | 2 | 2 | 2 |

| Attaching Parts Kit | | A/P-103-00 | A/P-202-00 [§] | A/P-216-00 [‡] | A/P-302-00 [§] | A/P-316-00 [‡] |
|---------------------|-----------------|------------|-------------------------|-------------------------|-------------------------|-------------------------|
| 006-007-01 | 9/16-18 Locknut | 2 | 4 | 4 | 6 | 6 |
| 006-011-00 | Keeper Nut | 2 | 4 | 4 | 6 | 6 |
| 006-111-00 | Equalizer Nut | ---- | 2 | 2 | 4 | 4 |
| 007-001-01 | Equalizer Bolt | ---- | 2 | 2 | 4 | 4 |
| 007-007-00 | Keeper Bolt | 2 | 4 | 4 | 6 | 6 |
| 007-017-00 | Spring Eye Bolt | 2 | 4 | 4 | 6 | 6 |
| 013-004-00 | Equalizer | ---- | 2 | ---- | 4 | ---- |
| 013-044-01 | Equalizer | ---- | ---- | 2 | ---- | 4 |

§ For 33.5" axle spacing ‡ For 36" axle spacing

SLIPPER SPRINGS

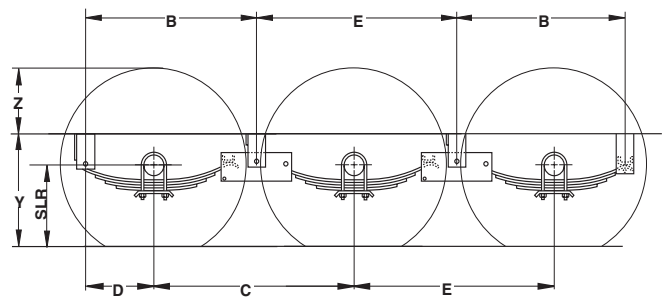
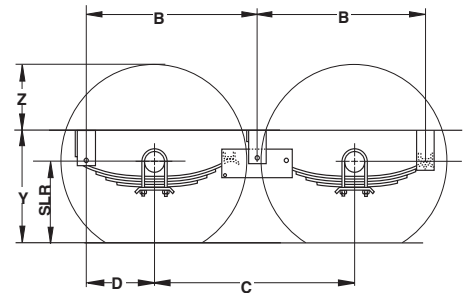
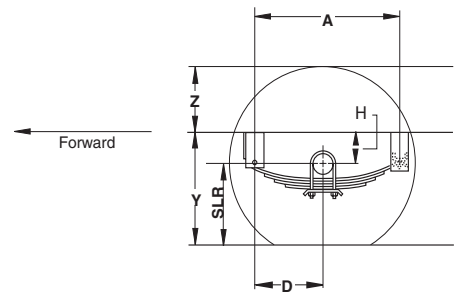
| | Single A/P-103-00 | Tandem A/P-202-00 [§] A/P-216-00 [‡] | | Triple A/P-302-00 [§] A/P-316-00 [‡] | |
|---|----------------------|---|------|---|------|
| A | 24.0 | ---- | ---- | ---- | ---- |
| B | ---- | 28.8 | 30.4 | 28.8 | 30.4 |
| C | ---- | 33.5 | 36.0 | 33.5 | 36.0 |
| D | 11.5 | 11.5 | 11.5 | 11.5 | 11.5 |
| E | ---- | ---- | ---- | 33.0 | 35.0 |

Note: All 2" Wide Slipper Springs

A , B , E - Hanger Spacing
 C - Axle Spacing
 D - Axle Location
 H - Center of Spindle
 Y - Frame Height
 Z - Top of Tire to Bottom of Frame
 SLR - Static Load Radius

Contact your local sales engineer or distributor to run ProSpec™ to determine Y, Z, SLR.

Some combinations of hangers and spring mounting may result in insufficient bump clearance. For additional Hanger kits, AP kits or other tires, refer to pages 85-87.



D72 OVERHANG PER SIDE

| | Min. | Max. |
|----------|-------|-------|
| Straight | 7.00" | 9.00" |
| 4" Drop | 7.87" | 9.00" |

Single axles

require 1 HAP-105-00 kit

Tandem axles

require 1 HAP-105-00 kit and 1 HAP-205-01 kits

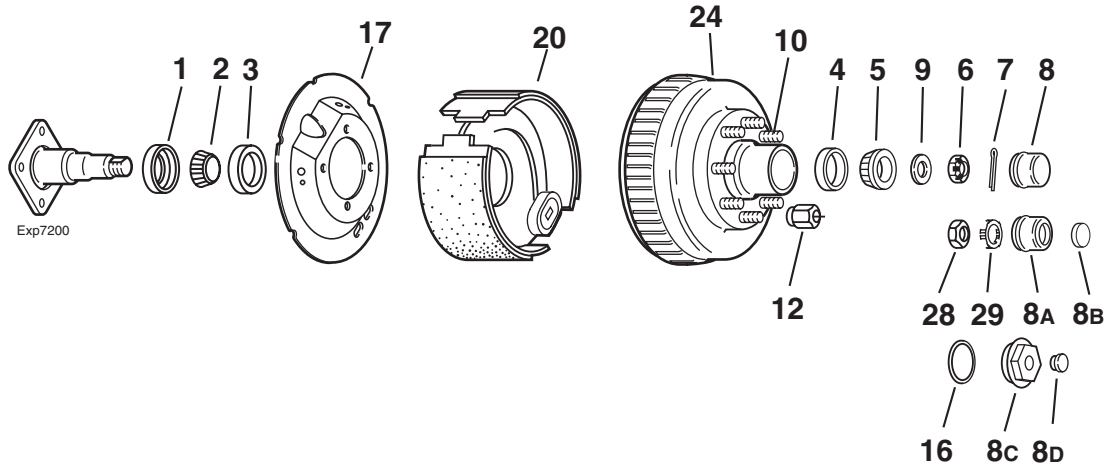
Triple axles

require 1 HAP-105-00 kit and 2 HAP-205-01 kits

RUBBER BUSHED SUSPENSION

| Part No. | Description | Ht. | HAP-105-00 | HAP-205-01 |
|------------|---------------------|-------|------------|------------|
| 028-068-02 | Front Hanger | 5.50" | 2 | ---- |
| 029-039-04 | Center Hanger | 4.50" | ---- | 2 |
| 030-068-02 | Rear Hanger | 4.85" | 2 | ---- |
| 006-011-00 | 9/16-18 UNC Locknut | | 2 | 2 |
| 006-038-00 | 5/8-11 UNC Locknut | | 2 | 2 |
| 006-112-00 | 1-8 UNC Locknut | | ---- | 2 |
| 007-007-00 | Keeper Bolt | | 2 | 2 |
| 007-181-00 | Spring Eye Bolt | | 2 | 2 |
| 007-182-00 | Equalizer Bolt | | ---- | 2 |
| 013-117-03 | Equalizer | | ---- | 2 |
| 059-200-00 | Decal | | 1 | 1 |
| 059-203-00 | Instruction Sheet | | 1 | 1 |

DEXTER AXLE



GREASE LUBE PARTS

| Item | Part No. | Description |
|------|------------|---|
| 1 | 010-036-00 | Seal |
| 2 | 031-030-02 | 25580 Inner Bearing Cone |
| 3 | 031-030-01 | 25520 Inner Bearing Cup |
| 4 | 031-028-01 | Outer Bearing Cup (02420) |
| 5 | 031-028-02 | Outer Bearing Cone (02475) |
| 6 | 006-001-00 | Spindle Nut |
| 7 | 019-002-00 | Cotter Pin (not used on E-Z Lube®) |
| 8 | 021-039-00 | Grease Cap |
| 8A | 021-043-01 | Grease Cap E-Z Lube® |
| 8B | 085-001-00 | E-Z Lube® Plug |
| 9 | 005-057-00 | Spindle Washer |
| 28 | 006-191-00 | Special Jam Nut for E-Z Lube® (after 2002) |
| 29 | 006-190-00 | Spindle Nut Retainer for E-Z Lube® (after 2002) |

OIL LUBE PARTS

| Item | Part No. | Description |
|------|------------|-------------------------------------|
| 1 | 010-063-00 | Seal (Unitized) |
| 2 | 031-030-02 | 25580 Inner Bearing Cone |
| 3 | 031-030-01 | 25520 Inner Bearing Cup |
| 4 | 031-028-01 | Outer Bearing Cup (02420) |
| 5 | 031-028-02 | Outer Bearing Cone (02475) |
| 6 | 006-001-00 | Spindle Nut |
| 7 | 019-002-00 | Cotter Pin |
| 9 | 005-057-00 | Spindle Washer |
| 8C | 021-035-00 | Oil Cap |
| 8D | 046-032-00 | Oil Cap Plug |
| ns | 046-052-00 | Oil Filler Plug (service part only) |
| 16 | 010-045-00 | 'O' Ring for Oil Lube |

STUDS & WHEEL NUTS

| Item | Part No. | Description |
|------|------------|------------------------|
| 10 | 007-224-00 | 5/8"-18 Press-in Stud |
| 10 | 007-223-00 | 9/16"-18 Press-in Stud |
| 12 | 006-053-00 | 9/16"-18 60° Cone Nut |
| 12 | 006-109-00 | 5/8"-18 90° Cone Nut |
| ns | 006-058-00 | 5/8"-18 Flange Nut |

HUBS

(After May 2000 for cast backing plate brakes)

| Item | Part No. | Description | Bolt Circle |
|------|------------|--------------------|-------------|
| 24 | 008-393-04 | Grease 9/16" studs | 8 on 6.50 |
| 24 | 008-393-06 | Grease 5/8" studs | 8 on 6.50 |
| 24 | 008-393-03 | Oil 9/16" studs | 8 on 6.50 |
| 24 | 008-393-05 | Oil 5/8" studs | 8 on 6.50 |

BRAKES

(After May 2000 with cast backing plate brakes)

| Item | Part No. | Description |
|------|------------|--|
| 17 | 036-118-20 | Dust Shield not included with brake assembly |
| 20 | K23-429-00 | RH12¼ x 2½" Electric Brakes |
| 20 | K23-428-00 | LH 12¼ x 2½" Electric Brakes |

Service Parts-Not Interchangeable With Cast Parts

HUBS

(Before May 2000 for stamped backing plate brakes)

| Item | Part No. | Description | Bolt Circle |
|------|------------|--------------------|-------------|
| 24 | 008-355-13 | Grease 9/16" studs | 8 on 6.50 |
| 24 | 008-355-15 | Grease 5/8" studs | 8 on 6.50 |
| 24 | 008-355-12 | Oil 9/16" studs | 8 on 6.50 |
| 24 | 008-355-14 | Oil 5/8" studs | 8 on 6.50 |

BRAKES

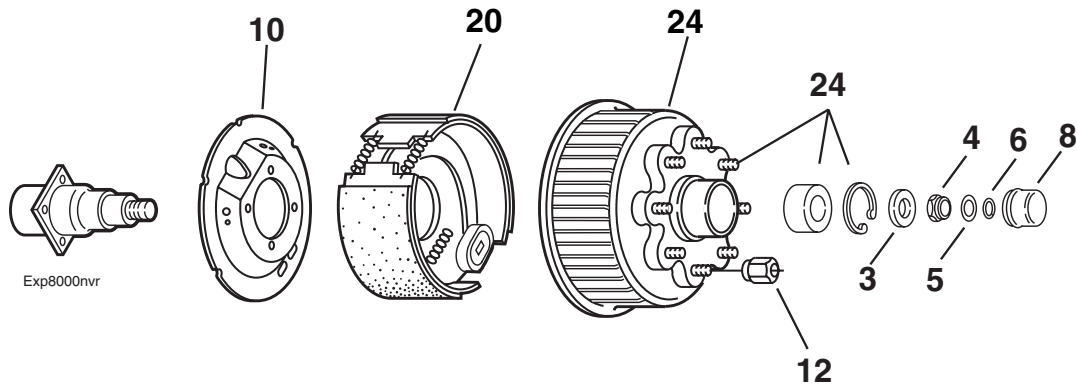
(Before May 2000 with stamped backing plate brakes)

| Item | Part No. | Description |
|------|------------|---|
| 17 | 036-110-00 | Dust Shield (top) included with Brake Assembly |
| 17 | 036-110-01 | Dust Shield (bottom) included with Brake Assembly |
| 20 | K23-369-00 | RH12¼ x 2½" Electric Brakes |
| 20 | K23-370-00 | LH 12¼ x 2½" Electric Brakes |

ns - not shown

7200 LBS. CAPACITY

865 NEV-R-LUBE™ HUB GROUP



NEV-R-LUBE™ PARTS 50MM

| Item | Part No. | Description |
|------|------------|----------------------|
| 3 | 005-149-00 | Spindle Washer |
| 4 | 006-183-00 | Spindle Nut |
| 5 | 092-002-00 | Washer, Torque Label |
| 6 | 069-096-00 | Snap Ring |
| 8 | 021-086-00 | Hub Cap |

12¼ X 2½ BRAKES

| Item | Part No. | Description |
|------|-----------------------|------------------------------------|
| 10 | 036-118-20 | Dust Shield |
| 20 | K23-428-00/K23-429-00 | LH/RH Manual Adjust Electric Brake |

HUBS WITH BEARING & WHEEL STUDS

| Item | Part No. | Description | Bolt Circle |
|------|------------|--|-------------|
| 24 | 008-395-80 | Hub & Drum includes: 007-223-00 9/16" Press-in Studs 031-071-03 50 mm Bearing Cartridge 069-093-00 Bearing Retainer | 8 on 6.50 |
| ns | 008-395-81 | Hub & Drum includes: 007-224-00 5/8" Press-in Studs 031-071-03 50 mm Bearing Cartridge 069-093-00 Bearing Retainer | 8 on 6.50 |

WHEEL NUTS

| Item | Part No. | Description |
|------|------------|-----------------------|
| 12 | 006-053-00 | 9/16"-18 60° Cone Nut |
| ns | 006-109-00 | 5/8"-18 90° Cone Nut |
| ns | 006-058-00 | 5/8"-18 Flange Nut |

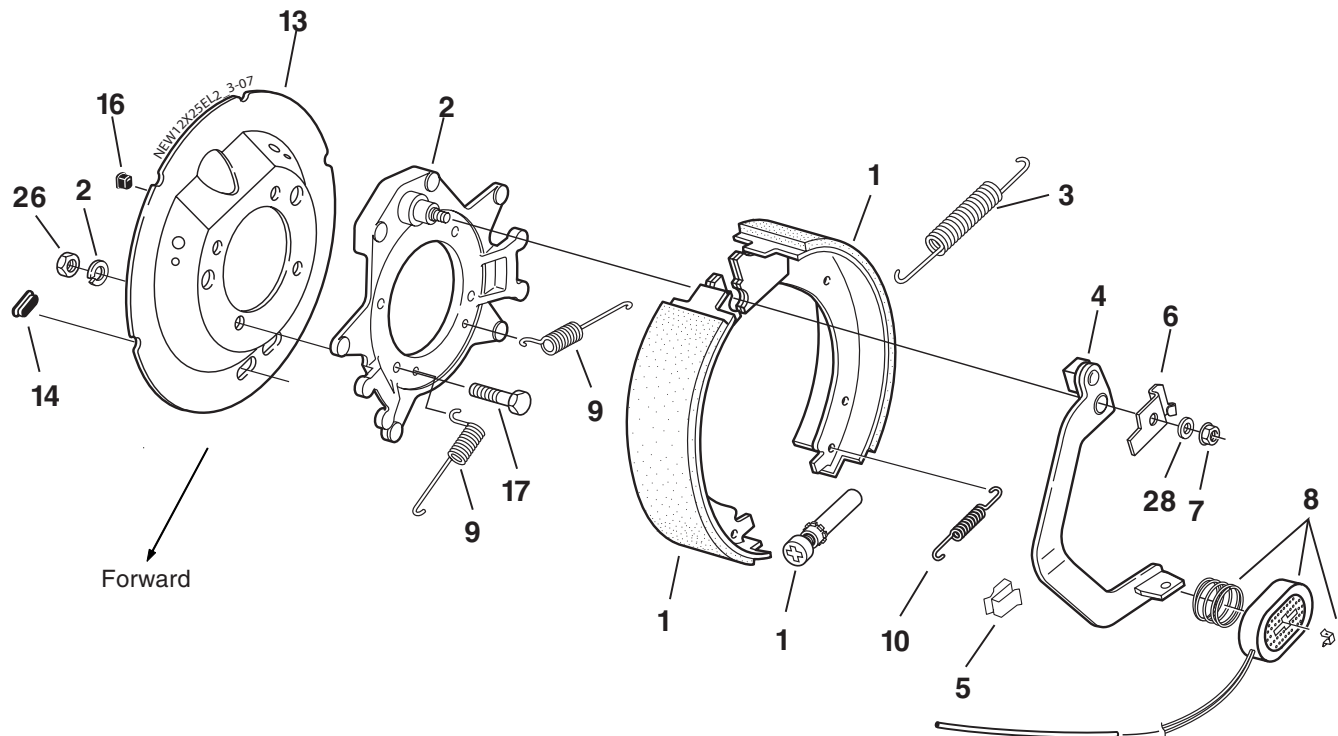
ns - not shown

DEXTER AXLE

12¹/₄ x 2¹/₂" ELECTRIC BRAKE - CAST BACKING PLATE

CSA approved at 7100#/14.2 SLR

7200 LBS. CAPACITY



ELECTRIC BRAKE

| Item | Part No. | Qty/Brk | Description |
|------|------------|---------|--|
| 0 | K23-428-00 | 1 | LH Complete Brake Assembly (shown) |
| 0 | K23-429-00 | 1 | RH Complete Brake Assembly |
| 1 | K71-497-00 | 1 | LH Shoe & Lining Kit containing: 1 #040-348-01 LH Primary S&L 1 #040-349-02 LH Secondary S&L |
| 1 | K71-496-00 | 1 | RH Shoe & Lining Kit containing: 1 #040-349-01 RH Primary S&L 1 #040-348-02 RH Secondary S&L |
| 2 | 036-119-02 | 1 | Backing Plate |
| 3 | 046-119-00 | 1 | Shoe Return Spring (grey) |
| 4 | 047-124-05 | 1 | LH Actuating Arm Assembly |
| 4 | 047-125-05 | 1 | RH Actuating Arm Assembly |
| 5 | 027-039-00 | 3 | Wire Clip |
| 6 | 071-455-01 | 1 | LH Lever Arm Retainer |
| 6 | 071-455-02 | 1 | RH Lever Arm Retainer |
| 7 | 006-092-01 | 1 | Flange Nut |
| 8 | K71-441-00 | 1 | Magnet Kit containing: 1 #042-136-00 Magnet 1 #027-050-00 Magnet Retainer 1 #046-117-00 Magnet Spring |
| 9 | 046-136-00 | 2 | Centering Spring |
| 10 | 046-018-00 | 1 | Adjuster Spring (red) |
| 11 | 048-017-00 | 1 | Adjuster Assembly |
| *13 | 036-118-20 | 1 | Dust Shield (sold separately) |
| *14 | 046-007-00 | 2 | Adjuster Slot Plug |
| *16 | 046-016-00 | 1 | Magnet Wire Grommet |
| *17 | 007-251-00 | 4 | Brake Mounting Bolt |
| *26 | 006-129-00 | 4 | Hex Nut |
| *27 | 005-058-00 | 4 | Lockwasher |
| 28 | 005-142-00 | 1 | Washer |

* Not included with complete brake assembly. Items sold separately.

**Brakes manufactured after
May 2000 use the
cast backing plate**

DEXTER AXLE